

An Autologous
Biologic Solution to
stop pain from
interfering with your life

Premium Skin
Regeneration Therapy

DrPRP



KGMP 11-1177
ISO13485-2003
CE 2460
FDA Registration



rmedica

Manufacturer / Seller | Rmedica Co., Ltd.
Tel | +82-2-853-2926
E-mail | info@rmedica.com
Website | www.rmedica.com
Product of Seoul, Korea



DrPRP

One Step / Adaptable Separation & Concentration Tube system



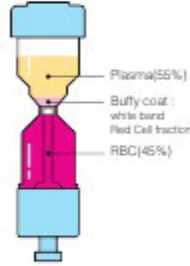
PRP (Platelet Rich Plasma)

PRP therapy growing in popularity as "the best practice Standard of Care"
PRP contains several different growth factors and other cytokines which may elicit the attraction of stem cells around the damaged region stimulating cellular proliferation and tissue regeneration.
Since the patient uses his or her own blood for the collection of platelets, there is very low possibility of infection or other side effects.



Dr.PRP is a medical device exclusively designed for PRP separation. Highly concentrated platelets by the Dr.PRP kit release large amounts of growth factors which are normally inside the platelets. The large amount of released growth factors induces the regeneration of damaged connective tissue rapidly and robustly. These growth factors may lead stable regeneration of the damaged area by stimulating the cells capable of wound healing.

Extraction of Buffy Coat



1st centrifugation separation spin

- Plasma and buffy coat extraction
- Plasma : yellowish layer, small amount of platelets
- White cell band : leukocyte and platelets
- Red Cell fraction : RBC layer
- Extraction of whole plasma and buffy coat, some upper RBC

2nd centrifugation concentration spin

- Extraction of lower fraction plasma and white Cell band

Distinct Features of Dr.PRP

01 Safety

We have built safety and reliability into the Dr.PRP Kit by exclusively using biocompatibility-certification completed raw materials as well as a thorough gamma-ray sterilization system according to the ISO11137

02 One Step - Simplicity

Contamination from surrounding air during the concentration of platelets is blocked by adopting the One-Kit system and double safety cap. Because of this feature, secondary contamination is minimized unlike other products in the market.

03 Speed & Convenience

The Buffy coat layer can be conveniently and easily identified by any ordinary person that precise separation of highly concentrated PRP is easily done.

04 Compatibility

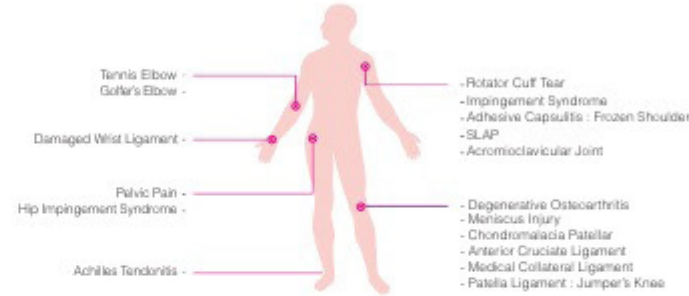
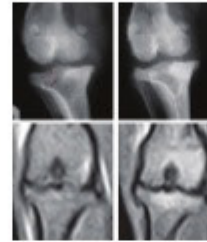
Several swing-out bucket type centrifuges may be compatible with the Dr.PRP Kit.



PRP Prolotherapy

Orthopedic Biologic Healing Applications

- Plantar Fasciitis, sports ligament injuries, frozen shoulder, chronic elbow inflammation
- Recovery from postoperative pain, damaged rotator cuff, tendon injury
- Achilles tendinitis, chondromalacia patellae, ligament injury of ankle, cartilage damage, degenerative arthritis, etc.



PRP Skin Regeneration Therapy

Cosmetic Rejuvenation

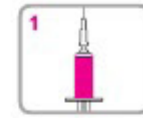
- Wrinkle improvement: fine wrinkles, eye wrinkles, wrinkles around mouth, forehead wrinkles
- Skin pores and elasticity : reduction of skin pore size, improvement in skin elasticity and skin tone
- Skin pigmentation disorders: melasma, hyper-pigmentation such as freckles, skin blemishes, etc.
- Other applications: improvement in hair loss, chapped skin, burn wound, dark circles under the eyes.

Additional Treatments With PRP Therapy

PRP + MTS -Reduce Pore Size -Wrinkle Improvement	PRP + Fraxell -Reduce Pore Size -Wrinkle Improvement
PRP + IPL -Reduce Freckles -Blemish Treatment	PRP + Laser Toning -Reduce Freckles -Pigmentation Treatment
PRP + Transplantation of Fat -Increasing Forehead volume -Cheek volume -Increased Breast Fat Graft Retention Rate	



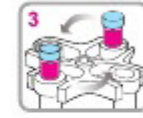
How to use Dr.PRP



1. In a 20 cc syringe draw 2 cc of anticoagulant, then draw 18cc of blood from a subject (final volume : 20cc)



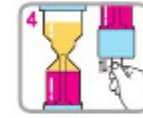
2. Inject the drawn blood into Dr.PRP kit through the upper injection port until the blood level reaches the 20cc scale marked on the kit. (For easier injection, tilt the kit at a 45° angle)



3. Separate the plasma layer and red blood cell (RBC) layer by the first centrifugation. (Prior to centrifugation, balance the weight of kit with counterbalance)

First Centrifugation (RPM)	
Male/Female	3,400 RPM/4Minutes

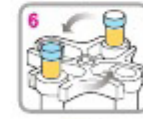
If the 1st separation fails centrifuge again at 3200RPM for 1-2 minutes.
*For subjects taking NSAIDs, aspirin, antihypertensive drugs, with cardiac disease, anemia, or vitamins, the centrifugation will have to be adjusted.



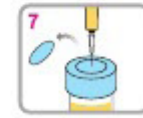
4. After the first centrifugation, identify the separation line of the plasma and the RBC layer. Then adjust the height of the separation line to the indicated point by pushing up or pulling down the blue knob located at the bottom of the Kit. (If the volume of the plasma layer or the separation is not quite well-done, additional centrifugation may be done for about 1-2 min at 3200 RPM)



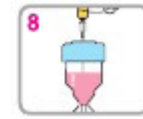
5. In order to block the plasma from the RBC layer completely, turn the blue knob (counter clockwise) located at the lower part of the Kit. Then tighten the end-cap just above the blue knob. Finally turn the blue knob (counter clockwise) again.



6. For increased concentration: Place the PRP Kit into the centrifuge with counterbalance for the second centrifugation to enrich the concentrated platelets. * The second centrifugation rate is 4-6 min at 3,200 RPM



7. Place the PRP Kit in its upright position with care in order to prevent mixing of the separated PRP and PPP. Remove the upper silicone lid on the Kit. Using a 10cc syringe with a long needle (>5cm) take out the PRP layer slowly from the upper part leaving 4cc at the base.



8. Shake and mix the remaining 4cc of the PRP layer, then administer the PRP.